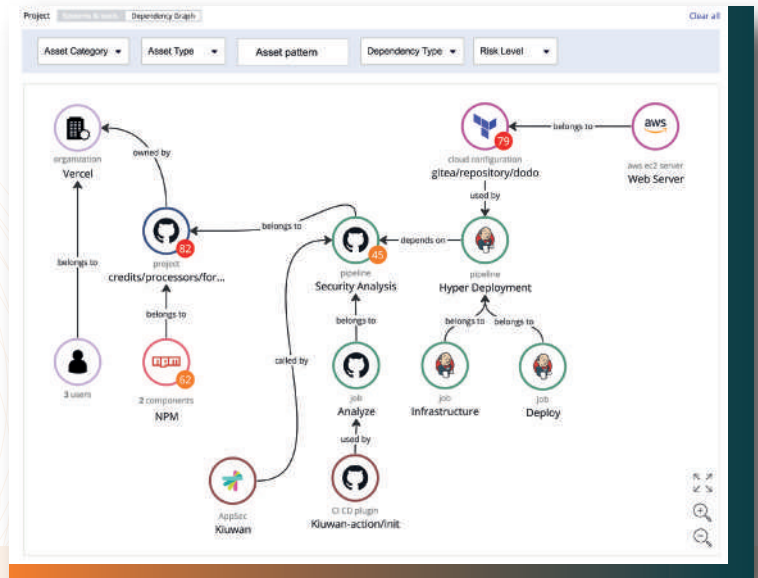


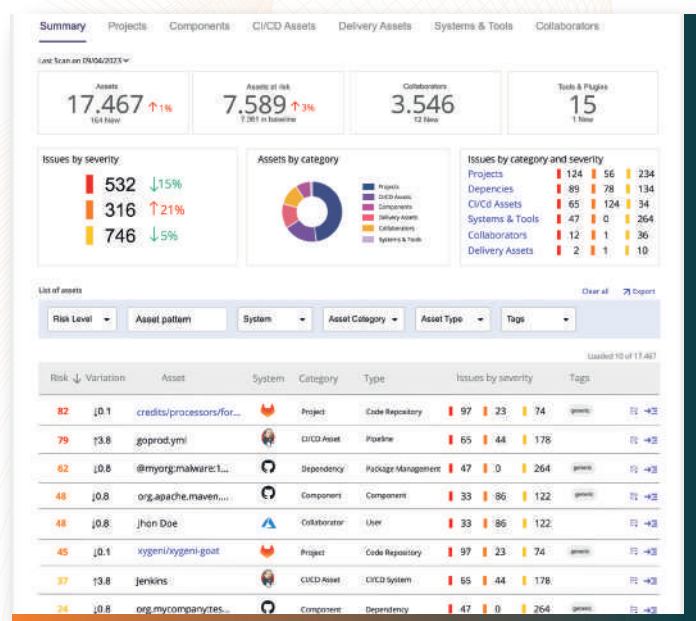
Xygeni SDLC Inventory

Empowering Comprehensive Visibility and Control over Your Software Development Lifecycle

Gain unparalleled visibility and control over every aspect of the Software Supply Chain with automated discovery, detailed asset inventory, and sophisticated dependency mapping.



In an era where software supply chains are increasingly becoming the focal point of cyber threats, a staggering 90% of companies admit lacking complete visibility into their supply chains, elevating their risk profile exponentially. This alarming statistic underscores the urgency for robust solutions like Xygeni's SDLC Inventory. Designed to combat the opacity shrouding software development processes, Xygeni's platform emerges as a crucial innovation, offering comprehensive visibility and control over every facet of the Software Supply Chain.



Xygeni's SDLC Inventory is a specialized platform dedicated to Software Supply Chain Security, meticulously designed to catalog and monitor an expansive array of assets within the software development lifecycle. From code repositories and third-party components to CI/CD pipelines, security tools, plugins, and DevOps infrastructure—encompassing prominent tools like GitHub, GitLab, Bitbucket, Jenkins, and a multitude of cloud resources—the SDLC Inventory offers an unparalleled breadth of coverage.

Solution Brief

Xygeni SDLC Inventory

The SDLC Inventory's interactive graph stands at the forefront of its unique offerings. This isn't just a static display but a dynamic, exploratory interface that illustrates the intricate relationships between the SDLC components, security scans, and real-time behavioral data. Users can interact with the graph to trace dependencies, assess risk impacts, and prioritize security efforts with precision—turning complex data into actionable intelligence. This level of interactivity is pivotal for organizations aiming to navigate and secure the intricate web of modern software development.



Automated Discovery

Xygeni's SDLC Inventory stands out with its automated discovery feature, which seamlessly identifies and catalogs all assets within the SDLC. This includes code repositories, build systems, deployment tools, and various cloud resources.

The automatic nature of this discovery process eliminates the need for manual integrations, thereby enhancing efficiency and reducing the risk of human error. This feature ensures that every element, regardless of its role or complexity, is accounted for in the security framework.



SDLC Asset Inventory

SDLC Asset Inventory module goes beyond simple discovery to provide a dynamic and detailed inventory system. It organizes assets by type, ownership, and purpose, creating a structured and accessible overview of the SDLC environment.

Each asset in the inventory is accompanied by rich metadata, such as creation dates, specific properties, and associated security threats. This level of detail facilitates a deep understanding of each asset's characteristics and its relevance to the overall security posture.



Dependency Mapping

Dependency Mapping is a sophisticated dependency mapping capability that clearly visualizes how different assets interconnect and rely on each other within the SDLC.

Dependency mapping is crucial for comprehending the ripple effects of changes or threats within the SDLC. It empowers teams to anticipate the broader impact of alterations in one part of the system on others, enhancing strategic planning and risk management.

This extensive mapping ensures that no component, however minute, escapes scrutiny, enabling organizations to enforce a holistic and robust security strategy across their entire software supply chain.

90%
of companies
admit lacking
complete visibility
into their supply
chains*

*BlueVoyant



Xygeni protects the security and integrity of the CI/CD processes and infrastructure and any software components throughout the entire SDLC. Xygeni shields your Software Supply Chain from unseen threats, providing comprehensive visibility and control throughout the entire SDLC. Our platform enables systematic risk assessment, prioritizes threatened components, and enhances your global security posture, all with unmatched efficiency and cost-effectiveness.



Schedule demo